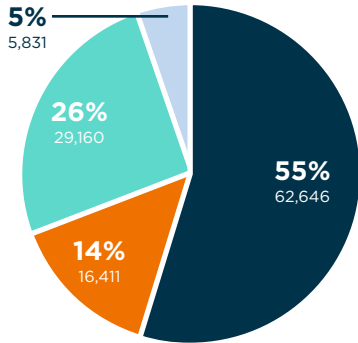


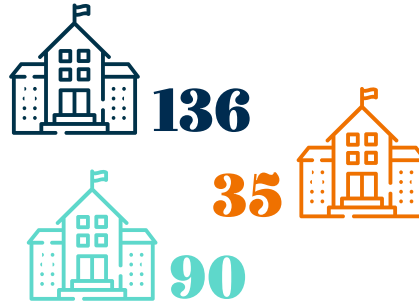
114,048

PUBLICLY FUNDED
STUDENTS



261

PUBLICLY FUNDED
SCHOOLS



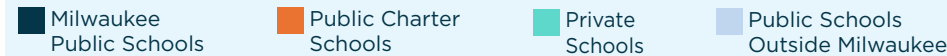
3

MAIN PUBLICLY FUNDED
SCHOOL
SECTORS

MILWAUKEE PUBLIC SCHOOLS¹: Traditional public schools governed by the MPS superintendent and elected school board. Secular and free for all students; some specialty schools limit enrollment. Must follow all federal and state laws/regulations applicable to public schools.

PUBLIC CHARTER SCHOOLS²: Public schools governed by an independent entity under a contract with a public agency. Secular and free for all students. Legally prohibited from limiting enrollment. Can obtain exemption from certain federal and state laws/regulations for public schools.

PRIVATE SCHOOLS³: Private schools governed by an independent entity, which may be secular or faith-based. Legally prohibited from limiting enrollment. Eligible students receive publicly-funded tuition vouchers. Schools are not public and therefore not subject to most federal and state laws aside from health/safety regulations.

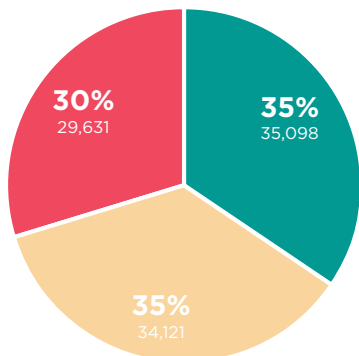


ENROLLMENT OF STUDENT SUBGROUPS BY SCHOOL SECTOR

	Milwaukee Public Schools	Public Charter Schools	Private Schools
Black	51%	46%	49%
Hispanic/Latino	28%	34%	36%
Asian	6%	12%	4%
White	11%	5%	7%
Economic Disadvantage	86%	85%	85%
Students With Disabilities ⁴	21%	11%	Not Available

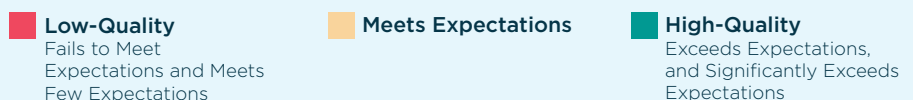
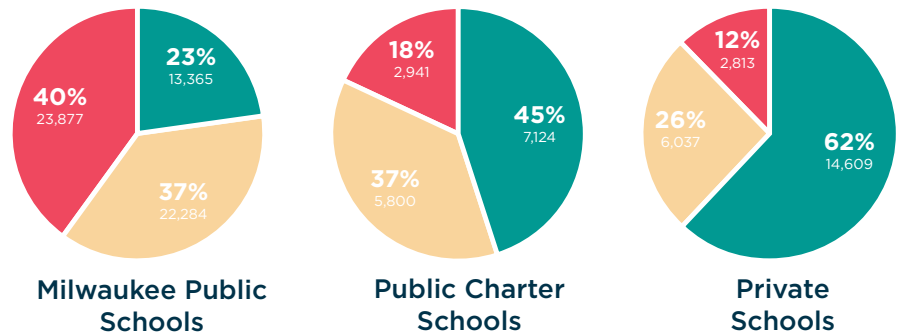
CITYWIDE SCHOOL PERFORMANCE

STUDENT ENROLLMENT BY STATE SCHOOL REPORT CARD RATING



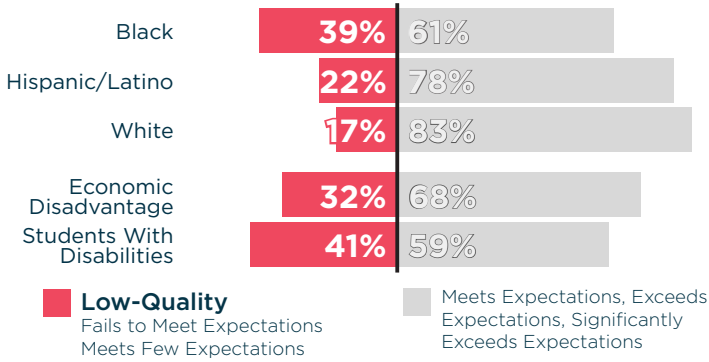
SCHOOL PERFORMANCE BY SECTOR

STUDENT ENROLLMENT BY STATE SCHOOL REPORT CARD RATING



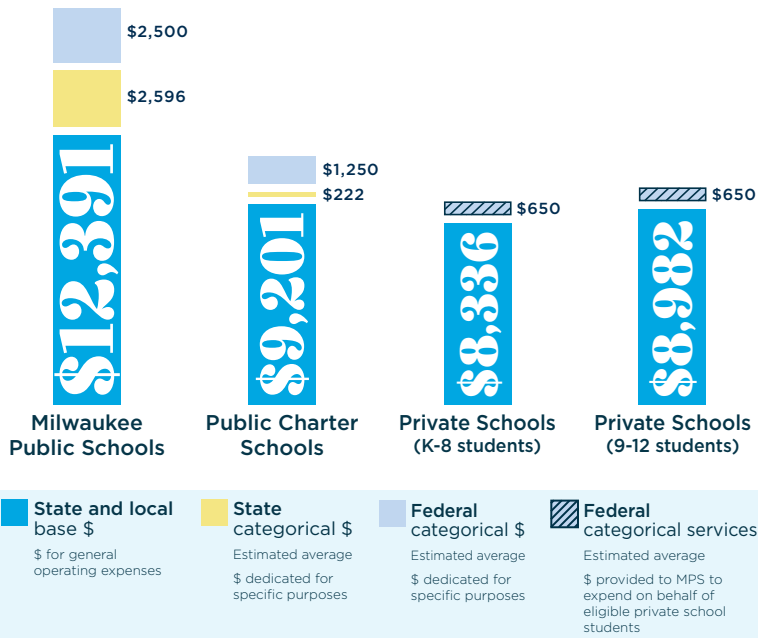
OPPORTUNITY GAPS BY STUDENT SUBGROUP

Students with disabilities, Black students, and those from low-income households are most likely to attend low-quality schools.



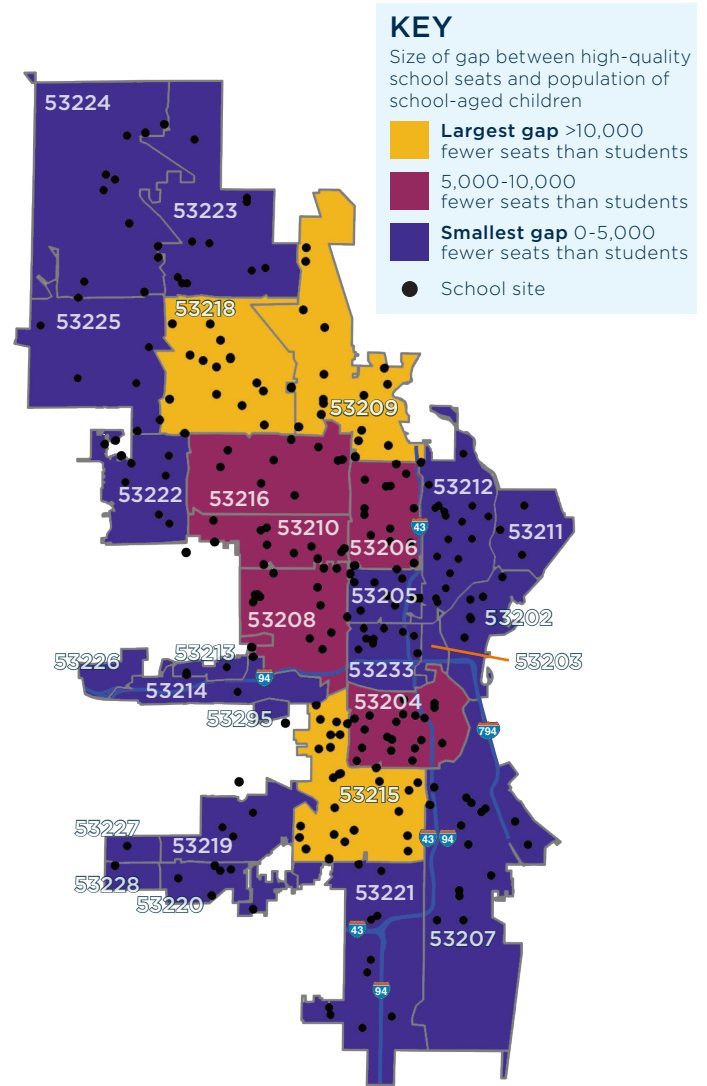
PER-PUPIL FUNDING BY SECTOR

Schools receive public funding for each student they enroll, but the amounts differ by school sector.



OPPORTUNITY GAPS BY ZIP CODE

In every ZIP code, there are more school-aged children than high-quality school seats. This gap in access to opportunity is worse in some parts of the city than others.



KEY TERMS

ACCOUNTABILITY: Schools are held responsible for student outcomes with a clear, performance-linked closure mechanism. By this definition, only Public Charter Schools are currently accountable for performance outcomes, as specified under the contracts with their authorizers. MPS Schools can be closed for any reason by the School Board, however the board does not have an established policy for performance-linked closure. Private Schools may be removed from the voucher program by the state only if they are found to have engaged in financial impropriety.

AUTONOMY: Schools can hire and fire staff, and control key decisions about things like instruction and spending. By this definition, Public Charter and Private schools operate autonomously. In MPS Schools, key decisions like these are made centrally.

ECONOMIC DISADVANTAGE: Students come from a household with an income no greater than 185% of the federal poverty level.

SCHOOL NETWORKS: Some Public Charter and Private school operators run multiple school campuses throughout the city. Sometimes, these campuses look similar and exist to offer the same type of

program to multiple neighborhoods. Other times, networks operate as 'mini school districts,' serving all grades K-12 schools or offering varied programs at different locations.

STUDENTS WITH DISABILITIES: Students have a qualifying impairment requiring an individualized education plan (IEP) entitling them to additional learning supports and resources.

WISCONSIN SCHOOL REPORT CARD: Produced by the Wisconsin Department of Public Instruction by statutory mandate, this is the primary metric for measuring the quality of every publicly funded K-12 school.

ABOUT THE DATA: All data are the most recent available and sourced from the Wisconsin Department of Public Instruction. Data exclude the 595 students attending 7 Partnership Schools, which are alternative private schools contracted by MPS to serve at-risk students. ¹**MPS SCHOOLS:** All schools directly operated by the Milwaukee Public Schools district, including instrumentality charter schools. ²**PUBLIC CHARTER SCHOOLS:** Independently operated charter schools, including charter schools authorized by the City of Milwaukee or UWM and MPS non-instrumentality charter schools. ³**PRIVATE SCHOOLS:** Private schools located in Milwaukee and accepting state-funded tuition vouchers through the Milwaukee Parental Choice Program (MPCP), Wisconsin Parental Choice Program (WPCP), and/or Special Needs Scholarship Program (SNSP), plus private schools located outside the city limits but which serve 75%+ MPCP students. ⁴**STUDENTS WITH DISABILITIES:** Each school sector serves and counts students with disabilities in unique ways. Private schools are not required by state and federal law to identify or service students with disabilities in the same manner as MPS Schools and Public Charter Schools. As a result, publicly available data undercounts private school students with disabilities. In all school sectors, students with severe physical and cognitive disabilities may be exempt from annual test mandates.